

Using Melco MML with Naim Rippers

V1.0 December 2014

MELCO



Naim networked music solutions include devices with excellent ripping capabilities.

These feature bit-perfect archival quality ripping, and have advanced metadata management. As such they form excellent partners for the Melco High Resolution Digital Music Library.

This document shows how to simply set up the Naim ripper to directly populate the Melco.

Overview

The Naim ripping devices, HDX and Uniti-serve, have a concept of SHARES for music that is to be accessed and played by the local Naim device, as well as any other UPnP player on the network. Additionally there is the concept of STORES.

STORES can again be played locally on the device or by UPnP players on the network, but are also the location to which music ripped on the Naim device is sent. STORES can be internal to the Naim device, or can be external as network or NAS storage. STORES are created by promoting a SHARE to be a STORE.

By default the Naim device will see any Melco unit on the network as a Music SHARE and can play music directly from the Melco.

The SHARE can be promoted to a STORE – in which case new rips can be sent automatically to the Melco.

This is all setup quite simply using Desk Top Client for Naim.

Desk Top Client

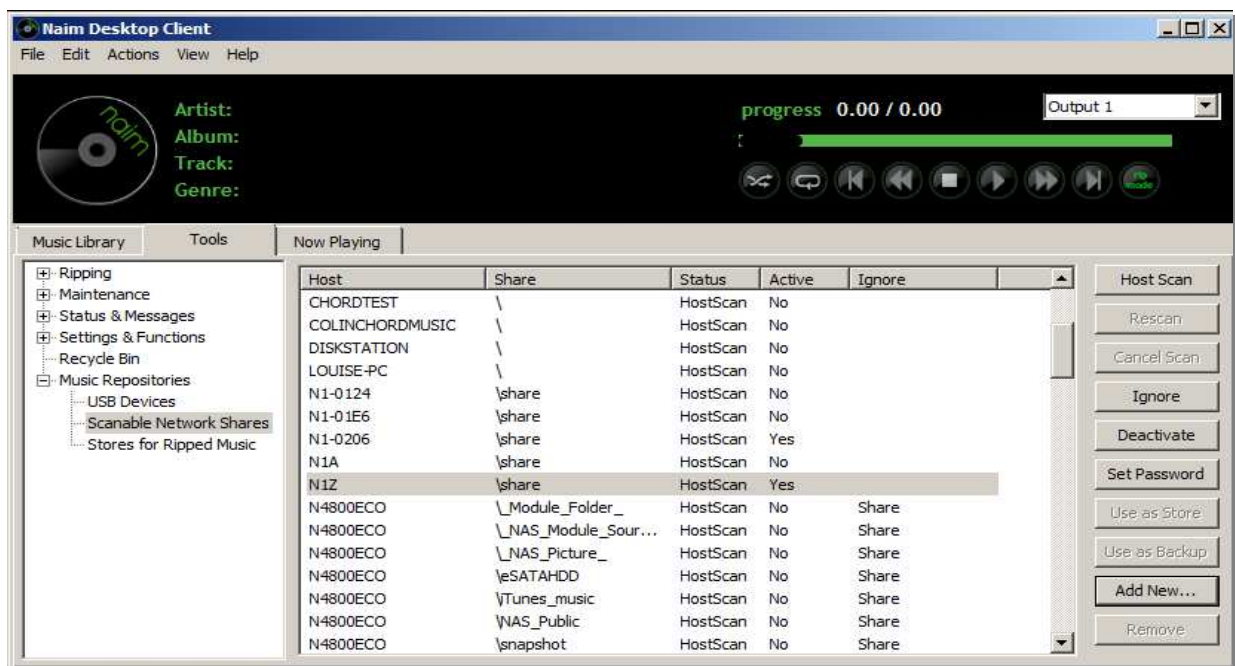
Desk Top Client for Naim is supplied with the Naim products, and is available to download from the Naim website.

To use DTC and to populate the Melco with ripped music directly from the Naim use the LAN Ethernet connection on the Melco

DTC runs on a PC and finds all connected Naim devices without needing to know their network settings. Simply select **Scan for Devices** and click the correct Naim ripper.

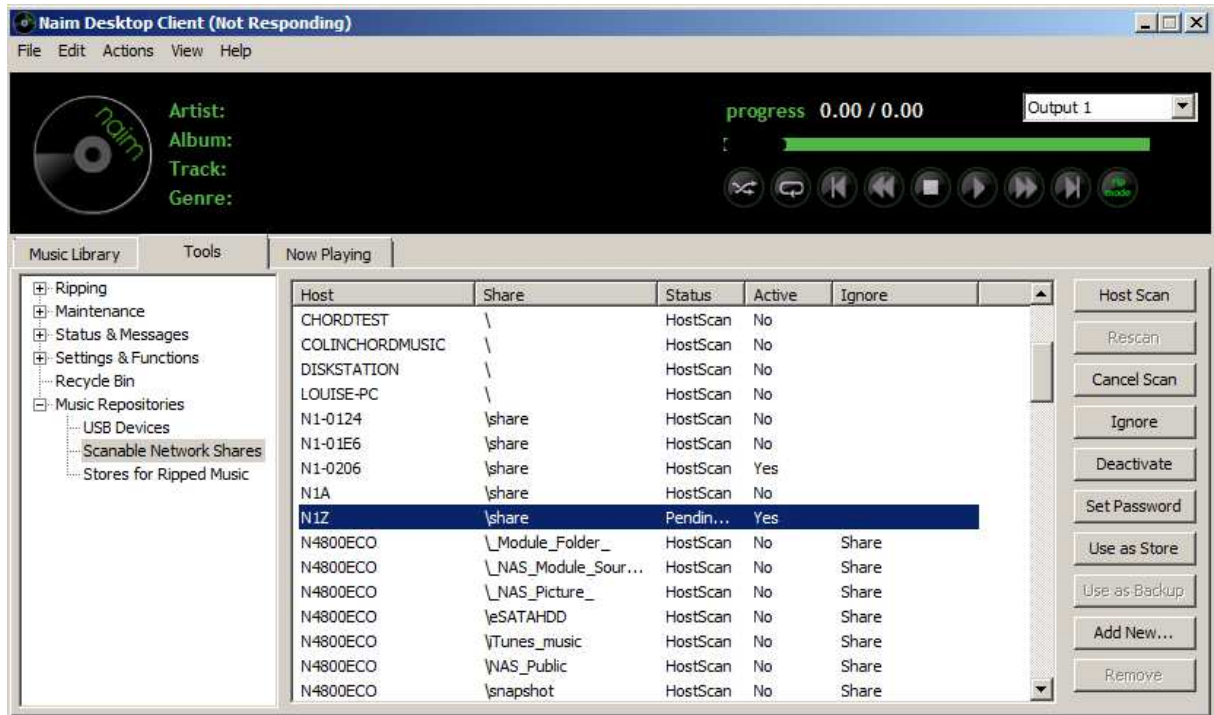
Once the Naim device is located the **TOOLS** tab of DTC shows **Music Repositories** with three options, **USB**, **Scanable Network Shares**, and **Stores for Ripped Music**.

We can locate the Melco in **Scanable Network Shares** and activate it by highlighting it in the list of available shares, and clicking the **Activate** button on the RHS of the UI.



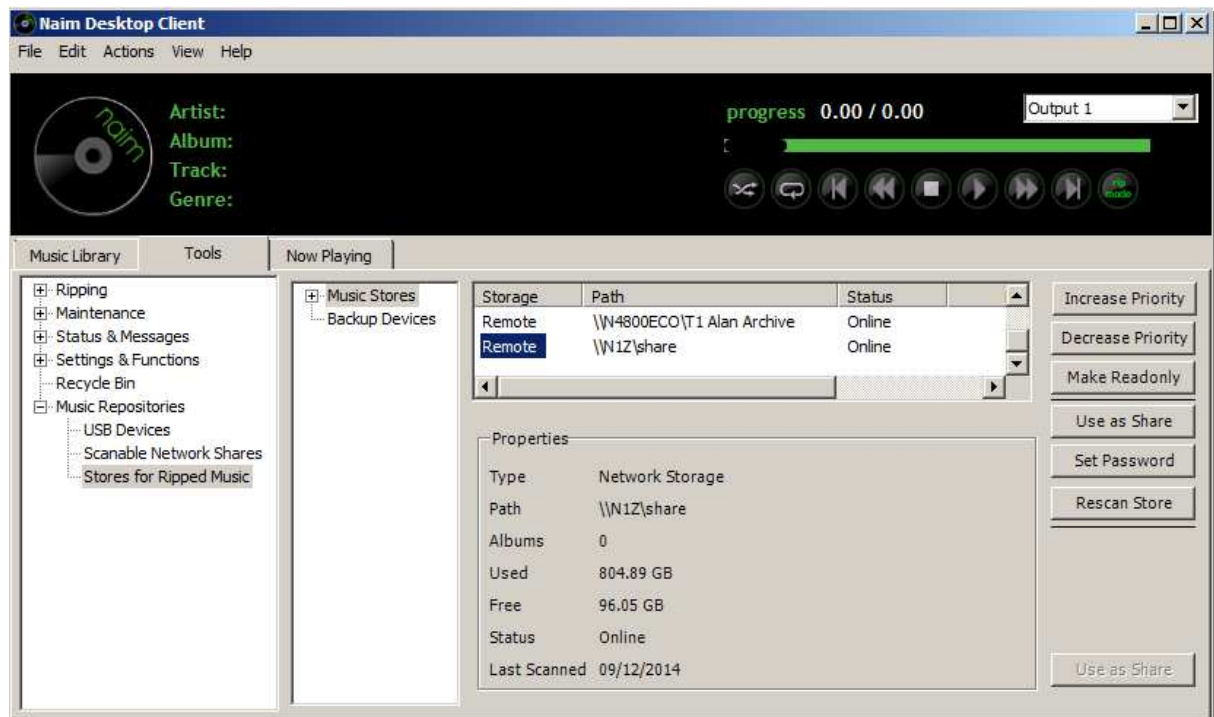
The Naim device will start to scan the Melco for any music which it might already contain – this results in the Melco having a status of initially **Pending** and later **Scanning**.

(This may take upwards of an hour if there is already a lot of music on the Melco as the Naim has to index all music on the Melco in order to manage the libraries)



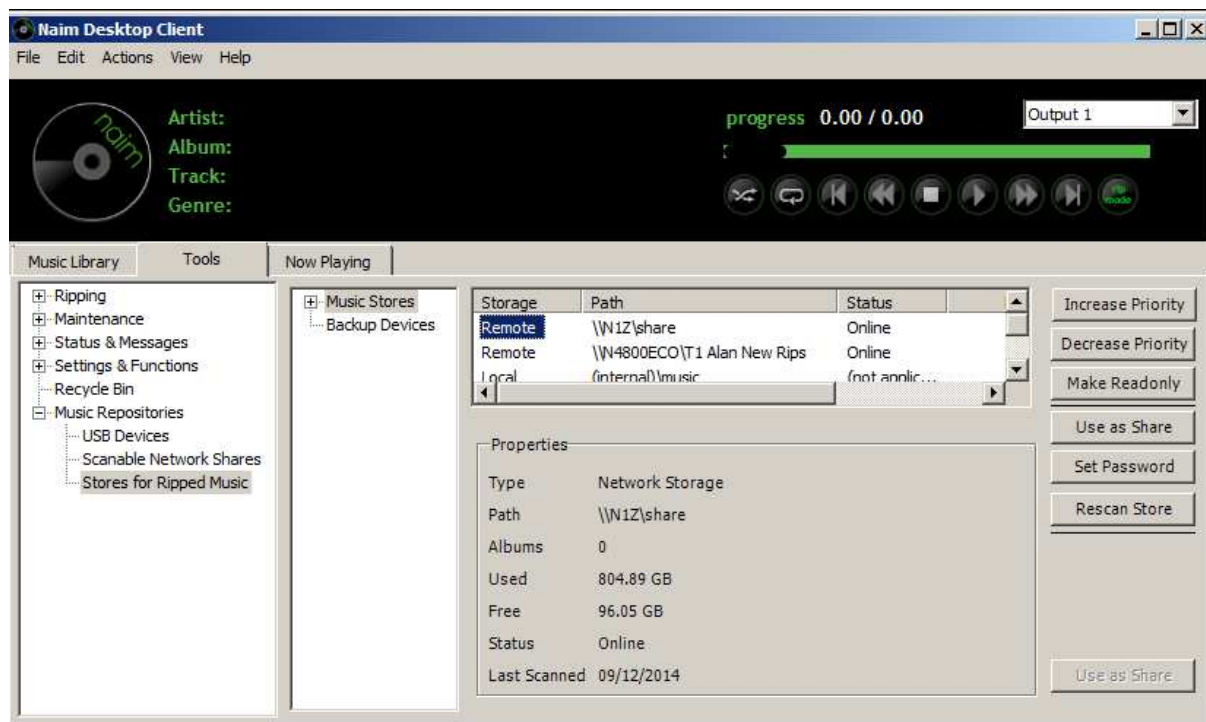
The Melco Share is promoted to a Store by simply clicking the **Use as Store** button on RHS.

The Melco will Grey - out and be removed from the list of **Scannable Network Shares**, but will now be visible in the list of **Stores for Ripped Music**.



Being the last added Store it will be at the bottom of the list of stores meaning that it will only be written to when the other stores are full or are offline.

To promote to the top priority as the default rip location simply highlight the Melco and click **Increase Priority** button a sufficient number of time to bring it to the top of the list of Stores.



OPERATION

Providing that the Melco is online all future rips on the Naim will now go directly to the Melco for playback on any player including the Naim local player or a Naim Streamer.

The Naim ripper automatically sets up the correct Naim Music folders on the Melco – MQ, LQ and HQ.

CD Rips all arrive automatically in the HQ folder and can be played on Naim Streamers or any other UPnP player connected to the same network.

By using the special PLAYER Ethernet socket it is possible to take full advantage of the Melco Direct Streaming Music for optimum performance on the connected Naim Streaming Music player – simply connect the streamer to the Melco using a single high quality Ethernet cable and select DIRECT mode on the Melco OLED display.

MELCO